



**The Blue Duck Gallery**  
16 Hemdean Road, Caversham  
Reading, Berks, RG4 7SX  
0118 9461003  
info@theblueduckgallery.co.uk  
www.theblueduckgallery.co.uk



**making art affordable**

## The Blue Duck Gallery May Newsletter

Wow, have I got treats in store for you guys. My visit to the Harrogate craft show was a roaring success and

I am expecting some extremely lovely new stock in the gallery over the next few weeks. But before we even get that far we already have fabulous new stock coming into the gallery on an almost daily basis.

Quite a few of you have been asking when the deck chairs featured in April's newsletter are arriving, well good news – they're here and they're wonderful. They are lovingly restored vintage chairs so the frames have a bit of character and are fantastically complimented by the stunningly bold and bright 'Deckchairstripes' canvas. Together with the most beautiful bunting, our Bambou salad bowls & servers and the gorgeous, hardwearing Linum cushions, napkins & table mats we have summer 'outdoor living' all wrapped up.

Having set your garden table with our zingy linens and put out your salad in our paprika, lime, plum, aubergine & lemon grass bowls you could serve some homemade lemonade in our Will Shakspeare confetti tumblers and put out a pretty posy in one of his confetti vases.

To keep your dinner guests company in the garden you could dot a couple of our Orchard Pottery animals around the flower beds and on the lawn. All the animals are



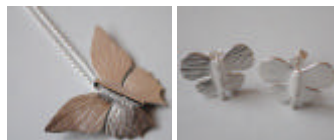
**Confetti Posy Vase by Will Shakspeare**



**Deck Chairs by Deckchairstripes & Linum  
Linens**



**Confetti Tumblers by Will Shakspeare**



**Butterfly Jewellery by Collette Waudby**



**Mirror with Ceramic Boat Surround**

frost proof so you can confidently leave them outside for people to find when they're having a nose around.



**Pottery Ducks by Orchard Pottery**

As if that's not enough to get you in the summer spirit (OK I know that tropical temperatures haven't quite kicked in yet but we need to get ready!!), we have a range of jewellery by Collette Waudby featuring very elegant butterflies and an augmented range of her classic 'leaf' jewellery.

Local ceramist Sophie Smith uses precious metals to finish her sumptuous designs. Her collection incorporates the themes of sailing boats, birds & trees, hearts, stars and flowers on mirrors, tiles, bowls & lidded boxes.

Our framing business is going great guns – you're definitely keeping me out of trouble – so please do keep your fascinating and varied work coming in. As you know, I never shy away from a challenge.

And finally remember that we are part of the Arts Council's Own Art Scheme so for any of our paintings, jewellery, ceramics, prints, glass, textiles... (or a collection of the above) you can pay in 10 monthly, interest free installments